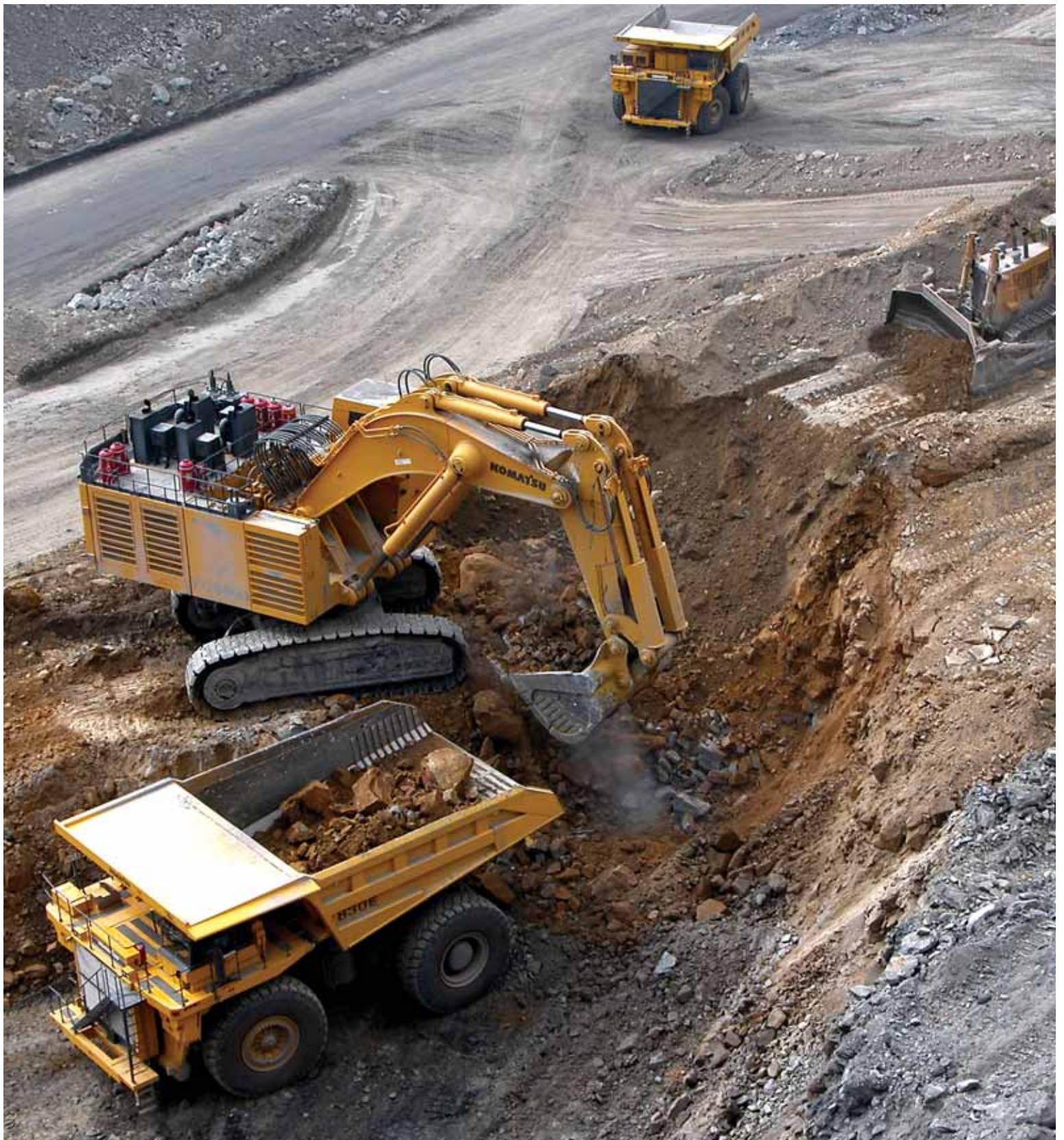




# TOUGH CUSTOMERS

A-101™/LVS™ Mobile Equipment Fire Suppression Systems







# PROTECTING HEAVY EQUIPMENT CALLS FOR BRUTE FORCE

Before ANSUL® introduced vehicle fire suppression systems to the mining industry in the late 1960s, the loss of equipment, productivity and life to vehicle fire was all too common. Forty years later, ANSUL protection is the common factor in this and other high-risk industries. Around the world, industries that depend on their heavy equipment trust ANSUL non-road mobile fire suppression solutions to protect them.



## SYSTEMS DESIGNED FOR MODERN REALITIES

Excavators, tunnel boring machines, harvesters, transit buses and other heavy machines work around the clock, often in rugged, hazardous environments. Highly flammable fuels, oils and hydraulic fluids flow through pressurized lines within inches of super-heated engine blocks, manifolds and turbochargers. One ruptured line can result in fast-spreading fire. With ANSUL A-101™, LVS™ and A-101/LVS Twin-Agent Fire Suppression Systems, however, protection is assured, 24-hours-a-day, 365 days-per-year.

**FM APPROVED ■ NFPA AND UL 1254 COMPLIANT ■ CE MARKED**

**GLOBAL DISTRIBUTION NETWORK ■ PROVEN CARTRIDGE OPERATION**

**MULTIPLE CONFIGURATION/DESIGN OPTIONS ■ EFFECTIVE ON A RANGE OF FIRES**

**MANUAL OR AUTOMATIC DETECTION/ACTUATION**

# SAFEGUARDING INVESTMENTS AROUND THE WORLD

Protecting machinery of all shapes and sizes comes with its own unique set of challenges. At ANSUL, we're used to meeting and exceeding those expectations. Equipping vehicles with the appropriate A-101, LVS and A-101/LVS Twin-Agent Fire Suppression Systems is a smart investment in preventing costly repairs and replacement, keeping insurance costs down, reducing downtime, and helping to prevent serious, life-threatening injuries.

## ANSUL DRY CHEMICAL FIRE SUPPRESSION SYSTEMS

The standard ANSUL A-101 Mobile Equipment Fire Suppression System discharges proven ANSUL FORAY® multipurpose dry chemical agent, quickly knocking down the flames. With tank capacities from 10 to 250 lbs. (4.5 kg to 113.4 kg), the A-101 fixed-nozzle system can be designed to "flood" entire volumes with chemical agent, or can be aimed at specific high-hazard areas. Anywhere in the world, trained ANSUL distributors can design, install and service a system that offers the ultimate in protection for specific vehicles.

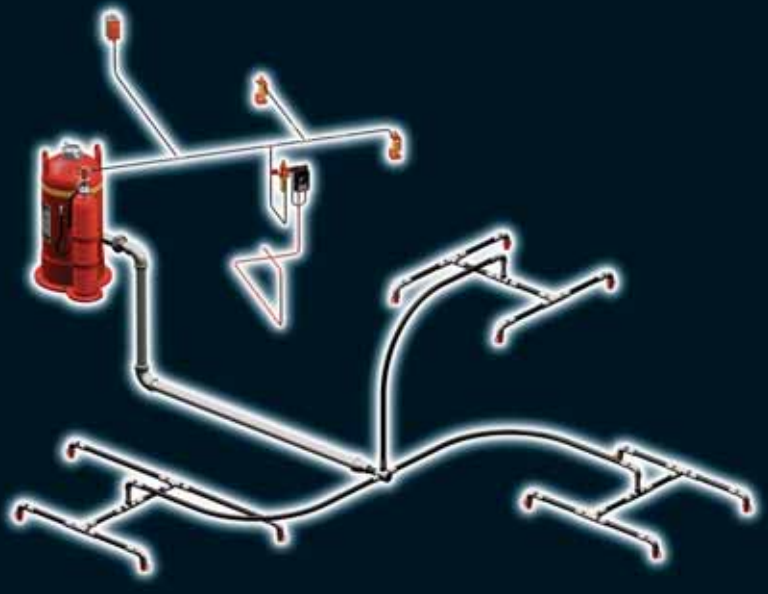
## CUSTOMERS WHO BENEFIT FROM ANSUL MOBILE EQUIPMENT FIRE SUPPRESSION SYSTEMS:

- AGRIBUSINESS
- AVIATION
- FORESTRY
- METAL PROCESSING
- POWER GENERATION
- SURFACE AND UNDERGROUND MINING
- TRANSPORTATION
- WASTE PROCESSING

A-101 DRY CHEMICAL SYSTEM



A-101 LARGE DRY CHEMICAL SYSTEM



Base ANSUL A-101 systems utilize automatic detection and actuation controls, backed up by remote manual actuators.

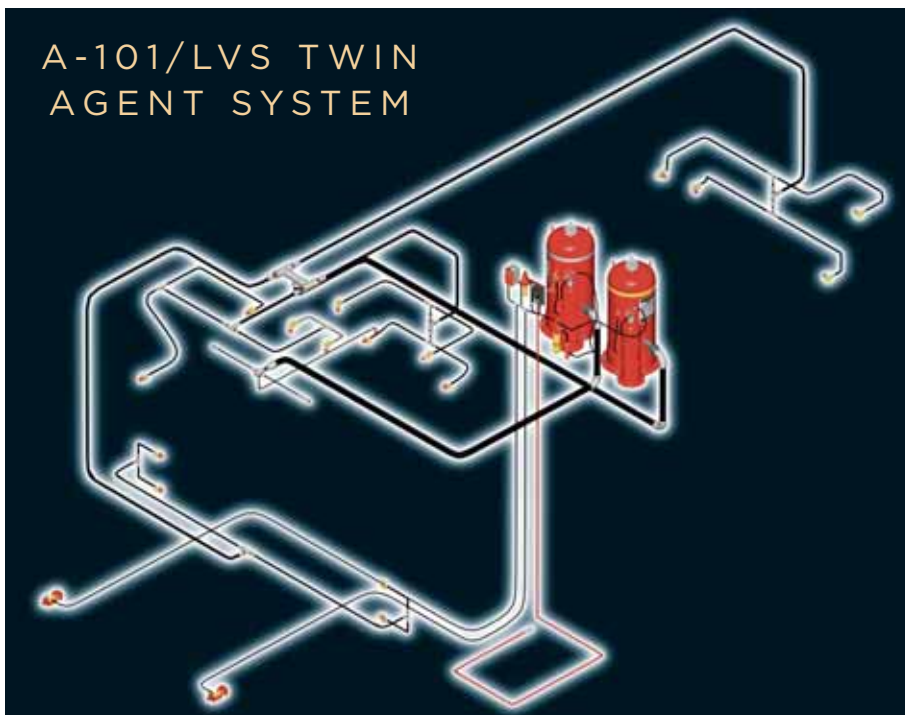
- LT-A-101 expands the capabilities of the original A-101 system for use in temperature extremes, from -65° to 210° F (-54° to 99° C).
- LT-LP-A-101 low profile system provides protection in underground mining environments.

### **ANSUL LVS LIQUID AGENT FIRE SUPPRESSION SYSTEM**

For the prevention of reflash, ANSUL LVS Liquid Agent Fire Suppression Systems outperform all others. Stored in 5-gallon (19L), 15-gallon (57L) or 30-gallon (114L) tanks, LVS agent cools surrounding areas, helping to contain fires and prevent reflash. Additionally, because it is a liquid, LVS agent flows along the same path as burning fuels to reach and suppress fires in areas dry agents cannot.

### **ANSUL LT-A-101/LVS TWIN AGENT FIRE SUPPRESSION SYSTEM**

For those who want the combined effects of suppression and cooling, ANSUL FORAY dry chemical and LVS wet chemical provide the ultimate one-two punch. While the dry chemical is knocking down flames, superior LVS agent cools surrounding areas, helping minimize the possibility of reflash. LVS system components are built for corrosion resistance and operate effectively within a temperature range of -40° to 120° F (-40° to 49° C).



## CHECKFIRE® DETECTION AND ACTUATION SYSTEMS

Exclusive ANSUL CHECKFIRE electronic detection and actuation systems provide detection, alarm, machine shutdown and actuation — all automatically if so desired.

### ■ CHECKFIRE SC-N (Self-Contained)

Rugged control modules resist shock and vibration, and feature internal diagnostics and internal/external power sources. Thermal detection options include linear wire or spot detectors.

### ■ CHECKFIRE MP-N (Mine Permissible)

Offers all the features of SC-N, plus holds MSHA approvals for use in underground mines (Permissible Applications in Explosive Methane/Air Applications).

## SHARPEYE™ 20/20 TRIPLE IR DETECTOR

For those who desire an extra layer of protection, ANSUL SharpEye infrared detection provides advanced triple-IR flame detection. Added to existing linear wire or spot detection, the beginnings of fire are detected much more quickly, allowing suppression to begin that much sooner. SharpEye features include sensitivity selection, automatic built-in testing, compact size and 100-degree field of vision. RS 485 compatible and FM approved. Ask your ANSUL dealer for more information on the benefits of SharpEye.

## PACK RED LINE® BACKUP SUPPORT

As backup to the primary fire suppression system, ANSUL recommends RED LINE dry chemical cartridge-operated extinguishers. These rugged, reliable handheld units are a proven means of extinguishing a wide range of Class A, B and C fires, and provide that extra measure of protection as required by authorities having jurisdiction.





# ANSUL SYSTEMS PROTECT THE WIDEST RANGE OF INDUSTRIES AND EQUIPMENT

## AGRIBUSINESS

- Combines
- Cotton Harvesters
- Hay and Forage
- Sprayers
- Tractors

## AVIATION

- Deicers
- Tow Tractors

## FORESTRY

- Chippers
- Combi Machines
- Feller Bunchers
- Forwarders
- Harvesters
- Loaders
- Log Stackers
- Skidders
- Tub Grinders

## METAL PROCESSING

- Coil Carriers
- Pallet Carriers
- High Stackers
- Ladle Carriers
- Slab Carriers
- Slag Carriers
- Straddle Carriers

## MINING

- Belthead Conveyers
- Blasthole Drills
- Continuous Miners
- Crawler Dozers
- Draglines
- Electric Shovels
- Excavators
- Haul Trucks

- Haulage Tractors
- Locomotives
- Longwall Systems
- Motor Graders
- Personnel Carriers
- Scoops
- Specialty Vehicles and Machines
- Switchers
- Tunnel Boring Machines
- Wheel Loaders

## POWER GENERATION/UTILITIES

- Coal Pile Maintenance
  - Crawler Dozers
  - Scrappers
  - Wheel Loaders

## TRANSPORTATION

- Commercial Transit Buses
  - Alternative Fuel
  - Para Transit
  - School
- Intermodal Rail and Port Machines
  - Container Handlers
  - Gantry Cranes
  - Quay Cranes
  - Reach Stackers
  - Side Loaders
- Railway Track and Structures
  - Ballast Machines
  - Right-of-Way
  - Tie Handling and Replacement
  - Track Maintenance
  - Wrecking Cranes

## WASTE PROCESSING

- Landfill Compactors
- Refuse Trucks
- Transfer/Recycle Station





Ansul Incorporated  
One Stanton Street  
Marinette, WI 54143-2542

800-862-6785 (United States, Canada)  
715-735-7411 (International)  
[www.ansul.com](http://www.ansul.com)

